

Effects of Public Health Insurance in Nepal*

Sabin Subedi

University of Strathclyde

FEBRUARY 2025

Expanding access to health insurance in low- and middle-income countries is a policy priority, but evidence on its effects remains limited. This paper provides new and timely evidence on the effects of government-led health insurance program in Nepal, a country uniquely suited given the program's staggered rollout across districts over time. Using novel and rich administrative health data from 2014-2022, I examine program's impacts on health care utilization, health outcomes and access to higher quality health care. To ensure a clean identification, I exploit a natural experiment created by a staggered rollout. The differences in differences design compares districts that have introduced the insurance program with districts that have yet to do so. I employ the Callaway and Sant'Anna (2021) estimator to address the potential biases from treatment effect heterogeneity, and as long as the parallel trends hold between these two groups, I can isolate the causal effect of health insurance.

Keywords: Health Insurance, NHIP

JEL-Classification: H51, I12, I13, I14, J16, O15

*Correspondence: sabin.subedi@strath.ac.uk. This paper is a work in progress and only preliminary results are presented. It is submitted in this format rather than as an extended abstract because of the need to explain the background about the health insurance program. All mistakes are my own.

1 – Introduction

The development of a well-functioning health care system marks an essential step down the path of national economic development. A common roadblock facing lower-middle income countries in this progression is the presence of high out-of-pocket medical costs, which leave households financially vulnerable to health shocks (Chetty and Looney 2006). Accordingly, the expansion of health insurance is often a paramount priority for developing nations (Kurowski et al. 2023; Miller, Pinto, and Vera-Hernández 2013), with the establishment of Universal Health Coverage (UHC) as the ultimate objective. While previous authors have outlined the importance of UHC in improving both public health (Kurowski et al. 2023; WHO and Bank 2023) and health care utilization (Das and Do 2023; Fitzpatrick and Thornton 2019; Huang and Liu 2023; Miller, Pinto, and Vera-Hernández 2013), there remains no consensus as to the impact of health insurance on health outcomes in lower-middle income countries.

To address this absence, I study the launch of the National Health Insurance Program (NHIP), a Nepalese public health insurance program that aimed to prevent health-related expenditures driving households into poverty and achieve UHC in Nepal. It was initially piloted in three districts in 2016 and gradually expanded to all 77 districts by 2022. I study this rollout by compiling monthly data from all the districts from 2014 to 2022 on health care utilization and various health outcomes. Overall, this unique dataset - the first of its kind compiled in Nepal - allows me to study the impact of health insurance on health care seeking behaviours. Further, I study the disparities in accessing health care and also impact on population health outcomes.

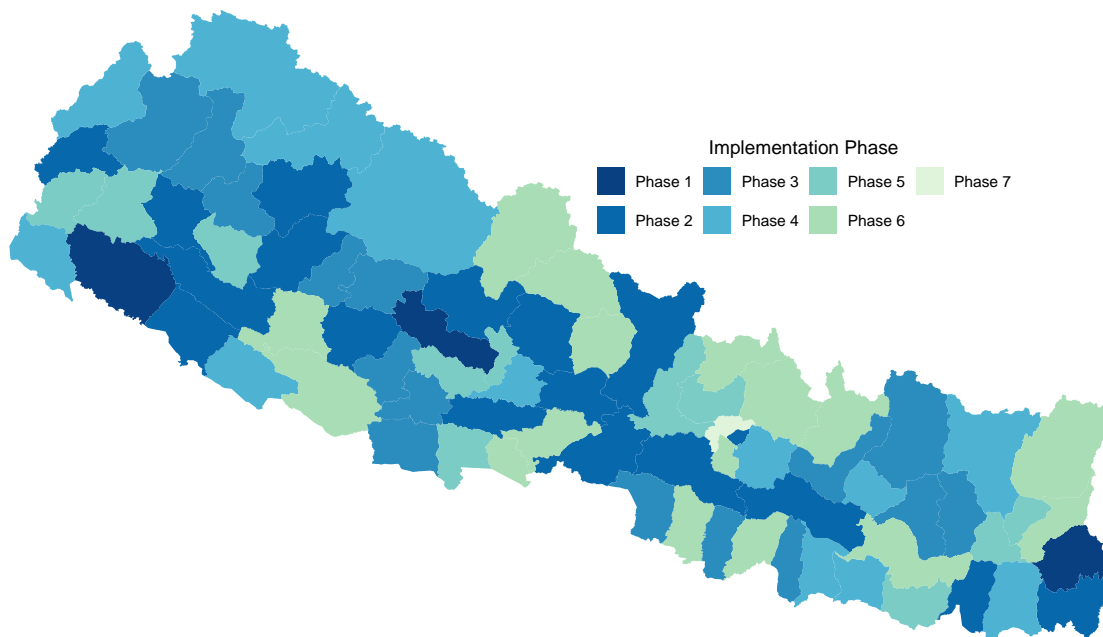
I use differences in differences methodology to get the causal impact of eligibility on health insurance by exploiting this natural experiment where the insurance was rolled out in phases over the years, and employ the Callaway and Sant'Anna (2021) estimator to address methodological challenges in analyzing staggered policy rollouts, providing more credible causal estimates by accounting for treatment effect heterogeneity.

2 – Background

2.1. The National Health Insurance Program of Nepal

National Health Insurance Program (NHIP) is a public health insurance program implemented by the government of Nepal starting in 2016 with the major objective of reducing out-of-pocket (OOP) health expenditure of households. In 2017, Health Insurance Board (HIB) was established to implement health insurance nationwide with a mandate of covering every citizen under health insurance. Figure 1 shows the phasewise implementation of health insurance in various districts from 2016 to 2022.

Figure 1 – Coverage of Health Insurance in Nepal



Source: Authors own calculations based on the data collected from annual reports, press released and notices.

Notes. This figure illustrates the spatial variation of the coverage of National Health Insurance Program across different districts from 2016 to 2022

NHIP is a voluntary insurance program, where it receives contribution from households and has to be renewed annually. A family of five members can register for health insurance at the annual premium of NRs 3,500 (USD 25.23) ¹, with any additional member costing NRs 700 (USD 5.05). Once registered the members of NHIP are entitled to free care upto maximum of NRs 100,000 (USD 720.96) per family per year. And additional members get coverage of NRs 20,000 (USD 144.19). Elderly members and patients of selected terminal diseases in the household receive addition coverage of NRs 100000 (USD 720.96) Alongside this, government also provides subsidies to ultra-poor, senior citizens, disabled and patient of selected terminal diseases.

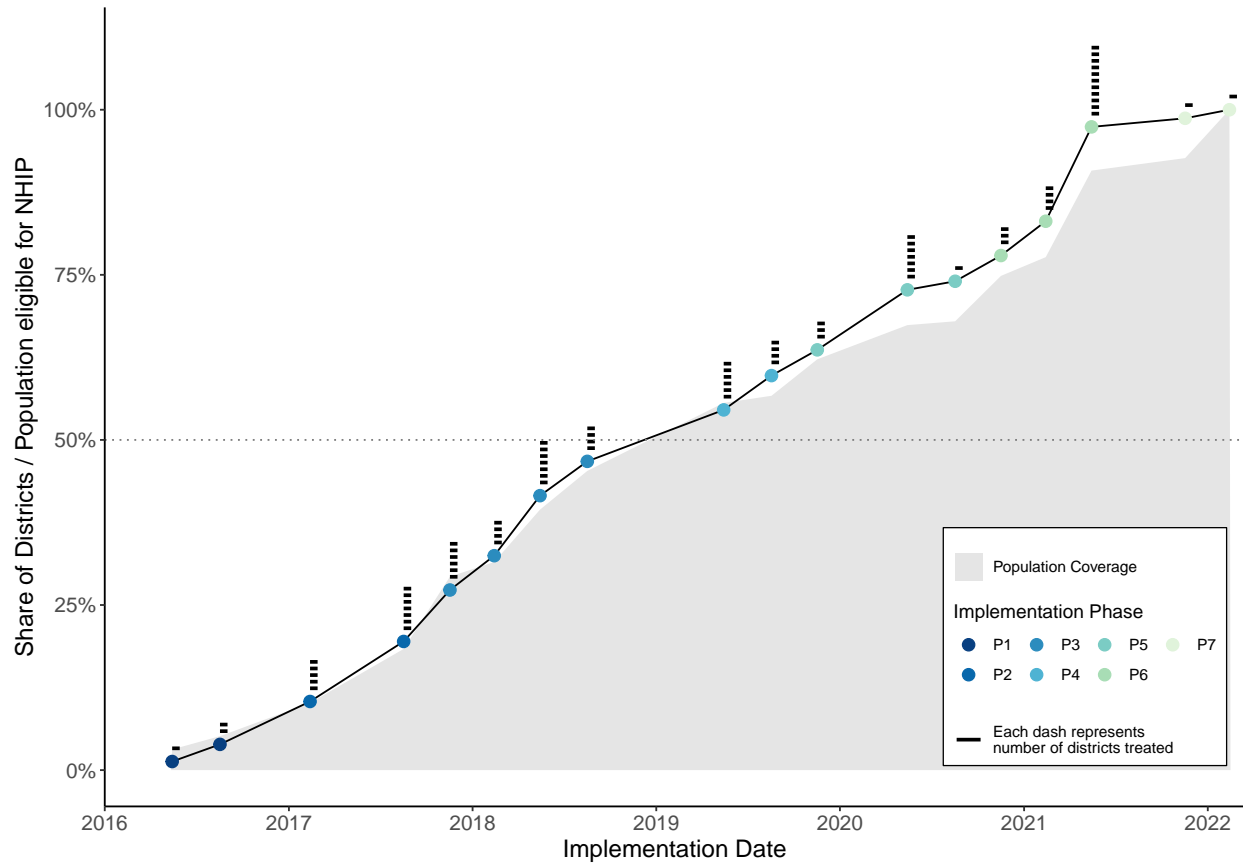
NHIP generously covers all preventive, curative, promotive, inpatient, emergency, surgery, medicines, diagnostics, rehabilitation and health aid equipments, alongside covering upto NRs 2000 (USD 14.42) of emergency ambulance service. It excludes services like expensive medical aid equipments, plastic surgery, most dental services and artificial insemination. Households during the registration select their preferred first point of contact (health care centers), which provides them facilities and if needed refers them to secondary care. It is a completely cashless system which does not require any payment at any point.

2.2. Rollout of NHIP

The rollout of the National Health Insurance Program (NHIP) was implemented in phases at the district level which are second level of administrative division as shown in [Figure 1](#). [Figure 2](#) shows the rollout of the NHIP program from 2016 to 2022. The rollout of the insurance does not have any specific dates every year when it is implemented due to administrative factors, and there was no prior public knowledge of when the health insurance would be started or in which group of districts. There was a delay of 3 months between the registration into health insurance and the use of health insurance.

1. USD 1 = NPR 138.7 at the time of writing

Figure 2 – Rollout of the National Health Insurance Program



Source: Authors own calculations based on the data collected from annual reports, press released and notices.

Notes. This figure illustrates the implementation of the National Health Insurance Program across different districts from 2016 to 2022. Dash at each point indicates the number of districts that were newly covered by health insurance at that time.

3 – Data

3.1. NHIP Rollout

I track the implementation of health insurance through survey of annual health reports of Department of Health Services (DoHS), notices and press releases from HIB. I create a rollout data for each district including exact date of commencement of registration and the date of implementation of health insurance.

3.2. District Health Information System

I use comprehensive data from District Health Information System (DHIS2) for this study. DHIS collects monthly data on visits, use of health services, referrals, family planning services, immunization and data related to diseases like malaria, leprocy, HIV Aids, Tuberculosis among others. It collects data for both public and private health services, but it is not compulsory for private sector. However, preceding the implementation of health insurance collection of data via DHIS2 was one of the priorities. Almost all of the empaneled health care institutions provide data through DHIS2.

4 — Empirical Method

4.1. Empirical Strategy

My primary goal is to indentify the causal effect of eligibility of health insurance on various important outcomes. Simply comparing districts that implement health insurance to those who do not implement health insurance results in bias because those districs that implement health insurance might differ in many unobservable ways that also correlate with each of their potential outcomes.

To get away from this bias, I use the gradual rollout of the health insurance and use a Difference in Differences (DID) method for casual identification of the effect of health insurance program. This method exploits the variation in timing of implementation, with some districts implementing earlier than others. It compares the evolution of outcomes for the earlier treated groups with groups not yet treated, controlling for district time invariant confounders and time-specific effects that impact all districts.

4.2. Estimator

Prior literature has shown that the popular two-way fixed effects (TWFE) estimator, where the outcome is regressed with the group and time fixed effects, can be biased in a staggered timing setup because it imposes an assumption of homogenous effects in treatment timing and homogenous effects in groups. This homogeniety is unlikely because of various reasons including that districts that implement health insurance earlier might get efficient with time with better enrollment strategies and service delivery. If there is any treatment timing heterogeneity, the static TWFE

estimator can be biased due to negative weight problem (Borusyak et al., 2024; de Chaisemartin and D'Haultfœuille, 2020; Goodman-Bacon, 2021) (see Roth et al. (2023) for elaboration). There are various estimators for different set of situations in a staggered adoption of DID. And the specific choice of estimator will depend on the type data, data quality and context.

I use Callaway and Sant'Anna (2021) (CS) estimator in this study to deal with treatment timing and treatment group heterogeneity. I do so firstly by aggregating the data at quarterly level. CS estimator estimates the average treatment effect on the treated (ATT) for group g , which is treated at time t . In my estimation g is defined as the cohort of units i (districts) that implement the treatment in the same period t (quarter-year). CS estimator does so with a relatively more intuitive set of control groups, which in my case are those districts who have not implemented the health insurance by time t , known as "not yet treated" groups in the literature. CS estimator also imposes a weaker parallel trends assumption because it only relies on post treatment parallel trends, rather than imposing parallel trends for all the districts and time and is more efficient when the outcome is serially correlated. CS estimator also provides an easy way of incorporating anticipation periods. And although I argue that the timing of treatment is quasi-random, CS estimator also accommodates the inclusion of covariates in case parallel trends assumption is only satisfied under inclusion of covariates. I will be estimating group-time average treatment effect defined as:

$$ATT_{gt} = \mathbb{E}_{gt}[Y_t(g) - Y_t(0) \mid G_g = 1] \quad (1)$$

There are various key assumption that is essentially for the validity of my identification strategy. The first assumption is that the treatment is irreversible, meaning that once the health insurance is implemented these districts do not go back to not having health insurance eligibility. This is a non-issue in our case, because once the treatment switches on, it is always treated. Second, this strategy rests on no anticipation assumption which means that the individuals do not change their behaviour just before the implementation of health insurance in anticipation of health insurance or even if they do, it is within a clearly defined period. In my context during the first time of implementation the difference in time of registration and eligibility to use health insurance is

about 3 months. So I use 1 quarter of anticipation period to account for this delay. And lastly I assume parallel trends, it means that in the absence of NHIP implementation, the difference in potential outcomes between health insurance eligible and not yet eligible districts would have evolved similarly. My use of 1 quarter anticipation means that the parallel trends assumption is now evaluated relative to period before registration. This is likely to hold because I argue that the timing of implementation can be considered as quasi-random because the order of rollout was not in any public domain knowledge, and the actual timing of implementation also was the function of administrative delays. This assumption cannot be tested directly, but I will include event study like plots to visually inspect pre-trends. However, pre-trends is neither necessary nor sufficient to prove parallel trends, so I include some falsification tests to show that health insurance has no effect on unrelated outcomes.

5 – Results

5.1. *Effects of health insurance on health visits*

I show the effects of eligibility of health insurance on hospital visits in [Table 1](#). The outcome is aggregated at the quarterly periods for each districts and I use simple aggregate group time effect (AGGTE) from the CS estimator for the analysis. In [Table 1](#) all of the outcomes are log transformed for easy interpretation. I show that log transformation does not change my interpretation in [Table A1](#), where I show the untransformed effects compared to the pre-treatment averages which are comparable to log transformed results. Following Roth and Sant’Anna (2023), I show event study style plot for the log transformed outcomes.

I find that eligibility of health insurance increases the total clients served (which includes all inpatient, outpatient and emergency services) by health service providers by 15.87 percent. In our dataset we also have information about total new clients served, which essentially calculates visits from patients that did not visit hospital in the past. This distinction allows us to also glance if the effect is driven only by people that already used to visit these health service providers, which could be those people that can either afford these health services or are already sick. I see that health insurance increases the total new clients served by about 14 percent. Although it is yet unclear from these estimates if these visits are from those population that was the main target of

health insurance. I see similar effects on Total outpatient department (OPD) visits, which increases by 15 percent and new OPD visits increase by 14 percent.

Table 1 – Health Insurance Eligibility on Health Visits

	Total Clients Served	Total New Clients Served	Total OPD Visits	Total New OPD Visits
Model:	(1)	(2)	(3)	(4)
<i>Variable</i>				
Is NHIP eligible = 1	0.1331*** (0.0234)	0.1052*** (0.022)	0.1281*** (0.0308)	0.1169*** (0.0328)
<i>Fit statistics</i>				
Number of Cohorts	17	17	17	17
Number of Time Periods	30	30	30	30

Notes. All the outcome variables are log-transformed.

Clustered (District) standard-errors in parentheses bootstrapped with 1000 iterations.

Estimation Method: Doubly Robust.

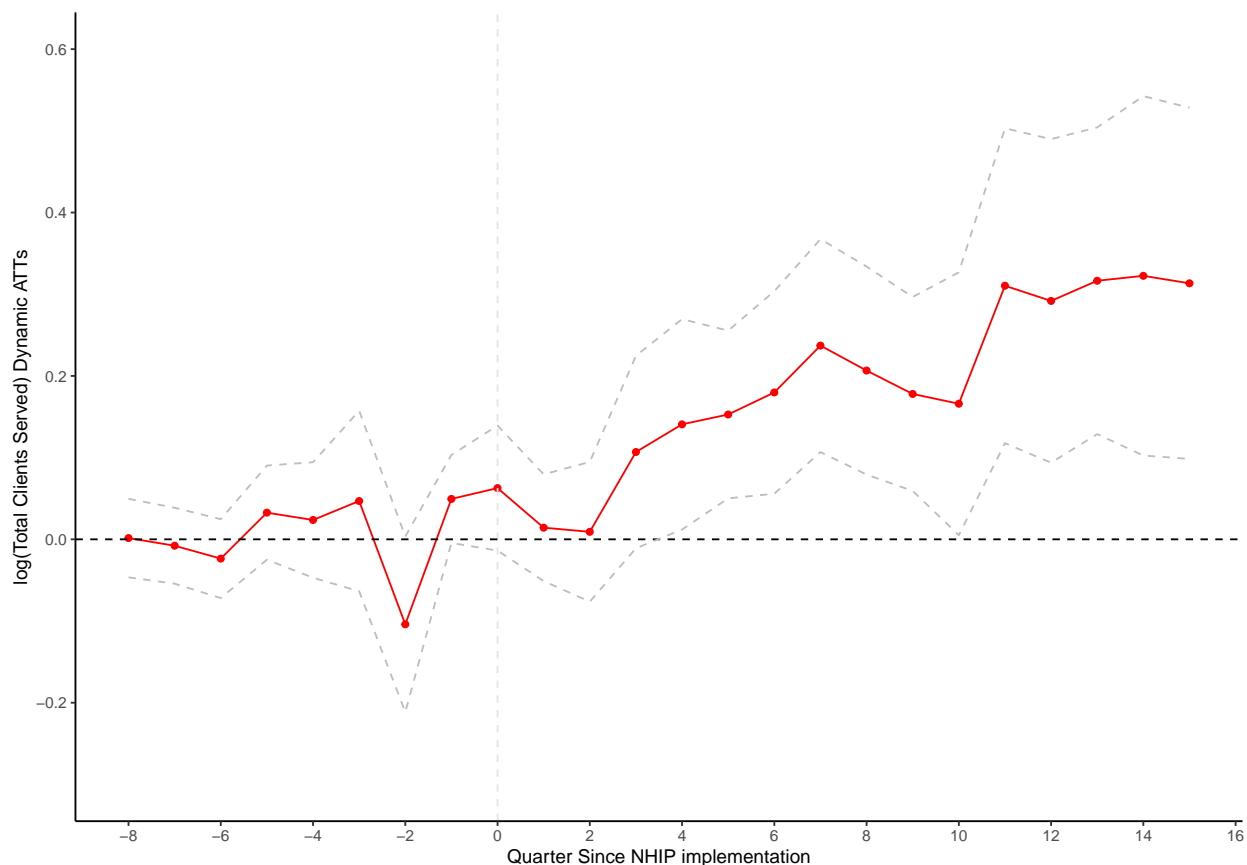
Control Group: Not Yet Treated, Anticipation Periods: 1.

Signif. Codes: *** 99% confidence

5.2. Dynamic ATT

I show dynamic ATT from the CS estimator in [Figure 3](#). It is an event study like plot, that also allows to see pre-trends. I show dynamic ATT for untransformed outcomes in [Figure 3](#). For these dynamic ATTs, I use varying period as an option. It means that I am essentially estimating short-gaps instead of long differences like in TWFE event studies. In other words with a varying base period, the estimates are the estimated treatment effect if the treatment had occurred in that period. It shows how the effects evolve over time. I see that the effects of health insurance are large. The effect starts to become significant after five quarters of implementation. The dynamic ATTs for all the outcomes in [Table 1](#) behave in the same way. This could possibly be due to two reasons, firstly the coverage is not that high early on, and also the awareness about the usage of insurance also picks up after the implementation.

Figure 3 – Total Clients Served Dynamic ATTs



Notes. This figure shows dynamic ATTs for total clients served by health service providers. The outcome is log-transformed total clients served, x-axis shows weeks since NHIP implementation, quarter 0 being the first implementation quarter

6 – Conclusion

This paper provides preliminary evidence on the effects of Nepal’s National Health Insurance Program using a staggered difference-in-differences design. Our findings indicate that health insurance eligibility increases healthcare utilization across multiple measures, with total clients served increasing by approximately 15.87% and new clients by 14%. These effects become significant after approximately five quarters of implementation, suggesting a gradual adoption process.

As this is ongoing research, several aspects remain to be explored. Future iterations will examine heterogeneous effects across demographic groups, analyze impacts on specific health

outcomes, investigate cost-effectiveness, and further explore potential mechanisms driving these results. Additional robustness checks and placebo tests will also be conducted to strengthen causal claims. This preliminary analysis suggests that government-led health insurance in Nepal has meaningful impacts on healthcare access, contributing to the broader literature on health insurance effects in developing economies.

References

- Callaway, Brantly, and Pedro H. C. Sant’Anna.** 2021. “Difference-in-Differences with multiple time periods.” *Journal of Econometrics*, Themed Issue: Treatment Effect 1, 225, no. 2 (December): 200–230. ISSN: 0304-4076, accessed May 5, 2024. <https://doi.org/10.1016/j.jeconom.2020.12.001>. <https://www.sciencedirect.com/science/article/pii/S0304407620303948>. (Cited on pages 2, 7).
- Chetty, Raj, and Adam Looney.** 2006. “Consumption smoothing and the welfare consequences of social insurance in developing economies” [in en]. *Journal of Public Economics* 90, no. 12 (December): 2351–2356. ISSN: 00472727, accessed May 5, 2024. <https://doi.org/10.1016/j.jpubeco.2006.07.002>. <https://linkinghub.elsevier.com/retrieve/pii/S004727270600082X>. (Cited on page 2).
- Das, Jishnu, and Quy-Toan Do.** 2023. “The Prices in the Crises: What We Are Learning from 20 Years of Health Insurance in Low- and Middle-Income Countries” [in en]. *Journal of Economic Perspectives* 37, no. 2 (May): 123–152. ISSN: 0895-3309, accessed May 16, 2024. <https://doi.org/10.1257/jep.37.2.123>. <https://www.aeaweb.org/articles?id=10.1257/jep.37.2.123>. (Cited on page 2).
- Fitzpatrick, Anne, and Rebecca Thornton.** 2019. “The Effects of Health Insurance within Families: Experimental Evidence from Nicaragua.” *The World Bank Economic Review* 33, no. 3 (October): 736–749. ISSN: 0258-6770, accessed May 8, 2024. <https://doi.org/10.1093/wber/lhx012>. <https://doi.org/10.1093/wber/lhx012>. (Cited on page 2).

Huang, Wei, and Hong Liu. 2023. “Early childhood exposure to health insurance and adolescent outcomes: Evidence from rural China.” *Journal of Development Economics* 160 (January): 102925. ISSN: 0304-3878, accessed May 8, 2024. <https://doi.org/10.1016/j.jdeveco.2022.102925>. <https://www.sciencedirect.com/science/article/pii/S0304387822000815>. (Cited on page 2).

Kurowski, Christoph, Anurag Kumar, Julio Cesar Mieses Ramirez, Martin Schmidt, and Denise Valerie Silfverberg. 2023. *Health Financing in a Time of Global Shocks: Strong Advance, Early Retreat*. Publication Title: Health Financing in a Time of Global Shocks: Strong Advance, Early Retreat. World Bank, May. <https://doi.org/10.1596/39864>. (Cited on page 2).

Miller, Grant, Diana Pinto, and Marcos Vera-Hernández. 2013. “Risk Protection, Service Use, and Health Outcomes under Colombia’s Health Insurance Program for the Poor” [in en]. *American Economic Journal: Applied Economics* 5, no. 4 (October): 61–91. ISSN: 1945-7782, accessed April 23, 2024. <https://doi.org/10.1257/app.5.4.61>. <https://www.aeaweb.org/articles?id=10.1257/app.5.4.61>. (Cited on page 2).

Roth, Jonathan, and Pedro H. C. Sant’Anna. 2023. “When Is Parallel Trends Sensitive to Functional Form?” *Econometrica* 91 (2): 737–747. <https://doi.org/https://doi.org/10.3982/ECTA19402>. eprint: <https://onlinelibrary.wiley.com/doi/pdf/10.3982/ECTA19402>. <https://onlinelibrary.wiley.com/doi/abs/10.3982/ECTA19402>. (Cited on page 8).

WHO, and World Bank. 2023. *Tracking Universal Health Coverage: 2023 Global Monitoring Report*. _Eprint: <https://elibrary.worldbank.org/doi/pdf/10.1596/40348>. World Bank. <https://doi.org/10.1596/40348>. <https://elibrary.worldbank.org/doi/abs/10.1596/40348>. (Cited on page 2).

A – Appendix

Table A1 – Health Insurance Eligibility on Health Visits (per 1000 population)

	Total Clients Served	Total New Clients Served	Total OPD Visits	Total New OPD Visits
Model:	(1)	(2)	(3)	(4)
<i>Variable</i>				
Is NHIP eligible = 1	39.75*** (7.2152)	17.51*** (9.6658)	38.06*** (7.8372)	28.63*** (5.8439)
Pre Treatment Mean	267.71	222.04	239.28	199.67
Effect (In %)	14.8	7.8	15.9	14.34
Log-transformed coefficient	0.1331	0.1052	0.1281	0.1169
<i>Fit statistics</i>				
Number of Cohorts	17	17	17	17
Number of Time Periods	30	30	30	30

Notes. All of the outcomes are per 1000 population

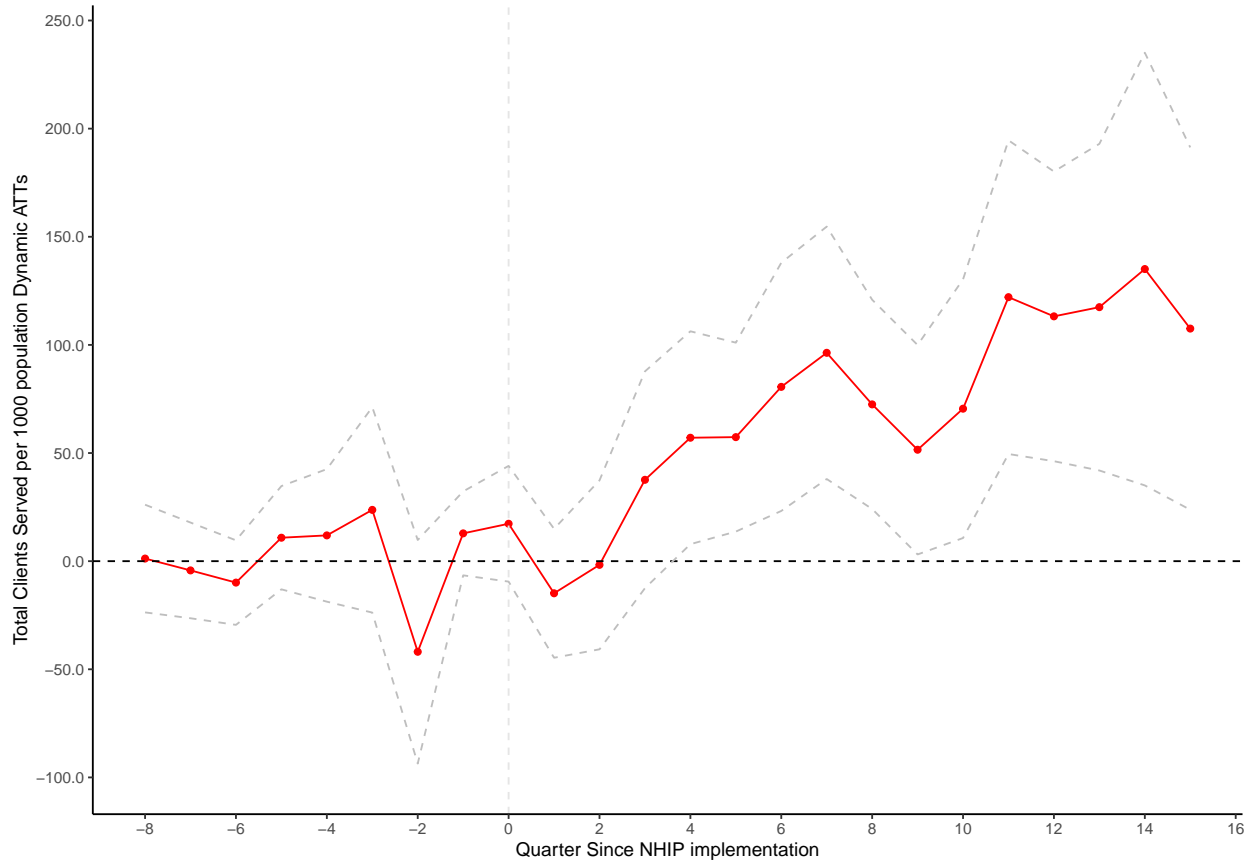
Clustered (District) standard-errors in parentheses bootstrapped with 1000 iterations.

Estimation Method: Doubly Robust.

Control Group: Not Yet Treated, Anticipation Periods: 1.

Signif. Codes: *** 99% confidence

Figure A1 – Total Clients Served per 1000 population Dynamic ATTs



Notes. This figure shows dynamic ATTs for total clients served per 1000 population by health service providers. The outcome is total clients served per 1000 population, x-axis shows weeks since NHIP implementation, quarter 0 being the first implementation quarter